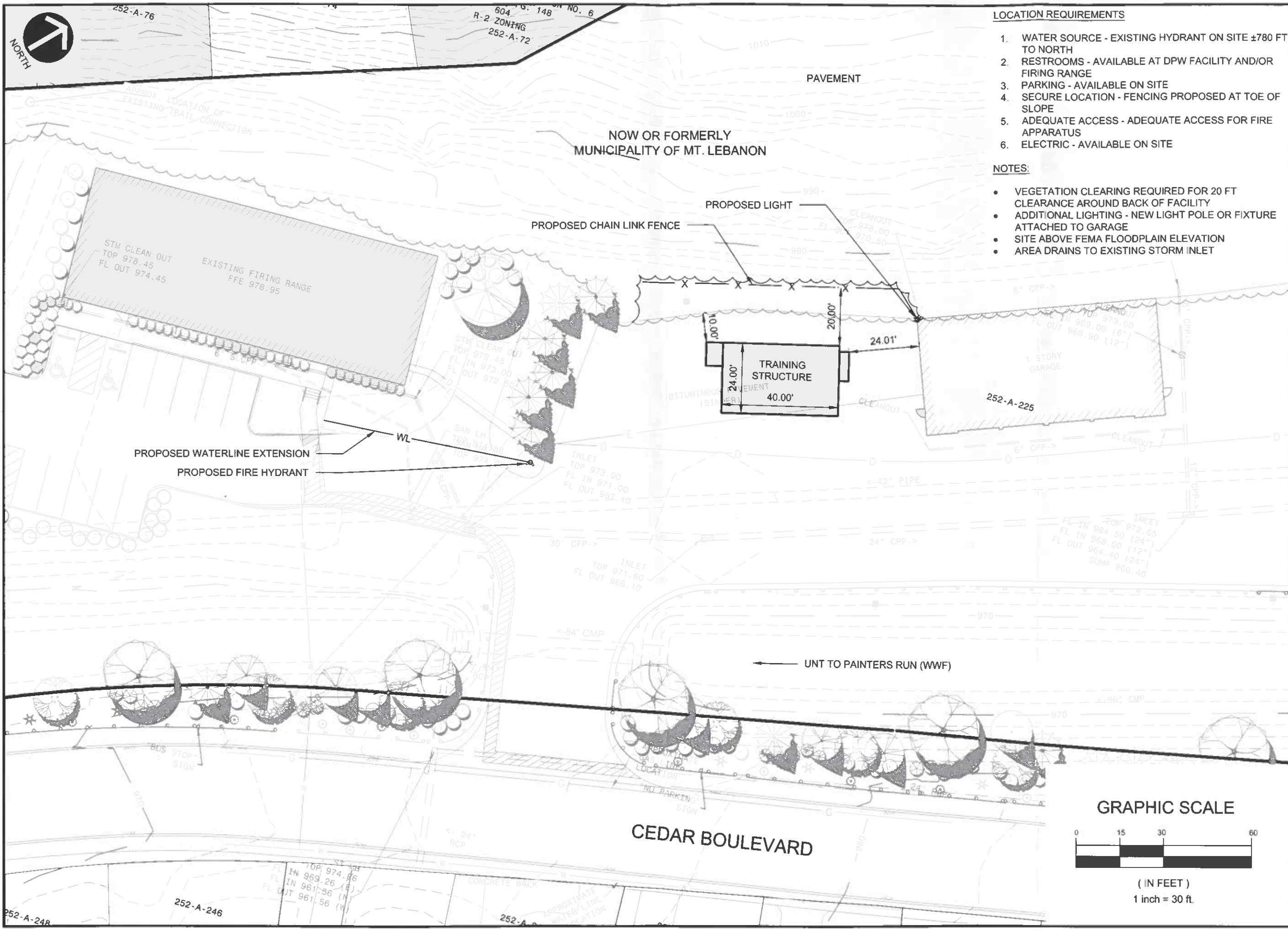


Path & Filename=G:\Projects\97000 Mt Lebanon\97262 Fire Training\DWG\02 Sheet\97262 CON-2 DPW Southern Entrance.dwg
 Plot Date=10/19/2022 3:53 PM Ryan M. Enoch, P.E. Save Date=10/19/2022 3:52 PM



LOCATION REQUIREMENTS

1. WATER SOURCE - EXISTING HYDRANT ON SITE ±780 FT TO NORTH
2. RESTROOMS - AVAILABLE AT DPW FACILITY AND/OR FIRING RANGE
3. PARKING - AVAILABLE ON SITE
4. SECURE LOCATION - FENCING PROPOSED AT TOE OF SLOPE
5. ADEQUATE ACCESS - ADEQUATE ACCESS FOR FIRE APPARATUS
6. ELECTRIC - AVAILABLE ON SITE

NOTES:

- VEGETATION CLEARING REQUIRED FOR 20 FT CLEARANCE AROUND BACK OF FACILITY
- ADDITIONAL LIGHTING - NEW LIGHT POLE OR FIXTURE ATTACHED TO GARAGE
- SITE ABOVE FEMA FLOODPLAIN ELEVATION
- AREA DRAINS TO EXISTING STORM INLET


GATEWAY
 The Gateway Engineers, Inc.
 Full-Service Civil Engineering & Surveying
 Pittsburgh, PA
 gatewayengineers.com
 855-634-8284

REVISION RECORD	
No.	Date

MT. LEBANON FIRE TRAINING
 CEDAR BOULEVARD
 PITTSBURGH, PA 15228
 PREPARED FOR:
MUNICIPALITY OF MT. LEBANON
 710 WASHINGTON ROAD
 PITTSBURGH, PA 15228

DPW COMPLEX
 SOUTHERN
 ENTRANCE
 Project Number: C-97262
 Drawing Scale: 1"=30'
 Date Issued: OCT 2022
 Index Number: -
 Drawn By: RME
 Checked By: DSD
 Project Manager: RME

CON-2

